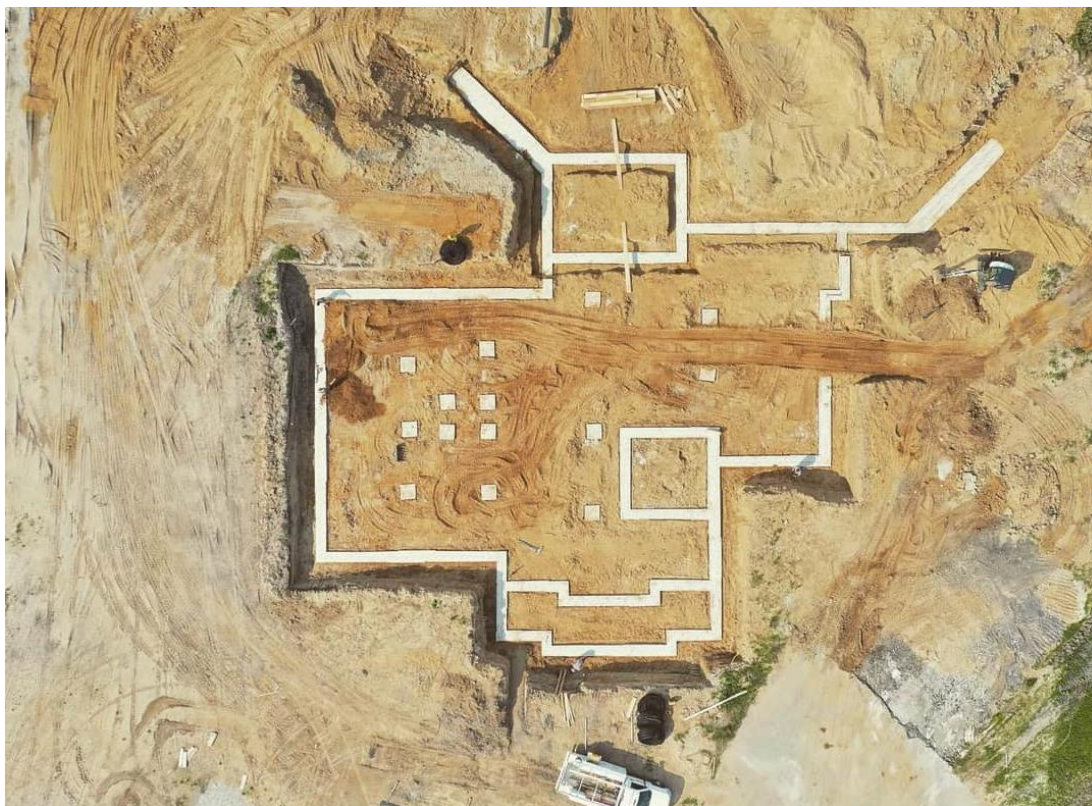




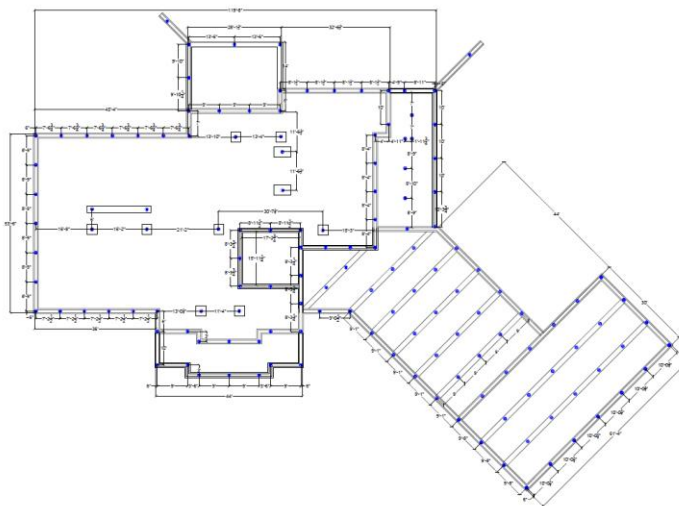
CASE HISTORY

SAFEBASE™ 2.875" STANDARD DUTY HELICAL PIERS

11,766 SQ FT HOME BUILT ON SAFEBASE HELICAL PIERS



A&M Home Services was contacted by Heritage Builders regarding a new foundation to be designed for a home in Lakeville, Indiana using helical piers. SafeBasements created a set of plans which were approved for the project. The plan consisted of 145 SafeBase 2.875" OD Standard Duty Helical Piers with 10"-12"-14" flights to be used to support the footings for the home.





The project was completed in stages with work continuing through September of 2020. Additional work is planned as well, beyond the original 145 helical piers. The average depth per pier was 21' with the deepest piers going 35' to achieve a torque of 8,000 ft-lbs creating a bearing capacity of 72 kips per pier. With the piers in place, the footings could be poured, creating a stable foundation that will not move for the life of the home.

A&M

A&M Home Services
602 E Jefferson St.
Plymouth, IN 46563
574-914-4408

www.roofsandbasements.com



www.safebasementsinc.com